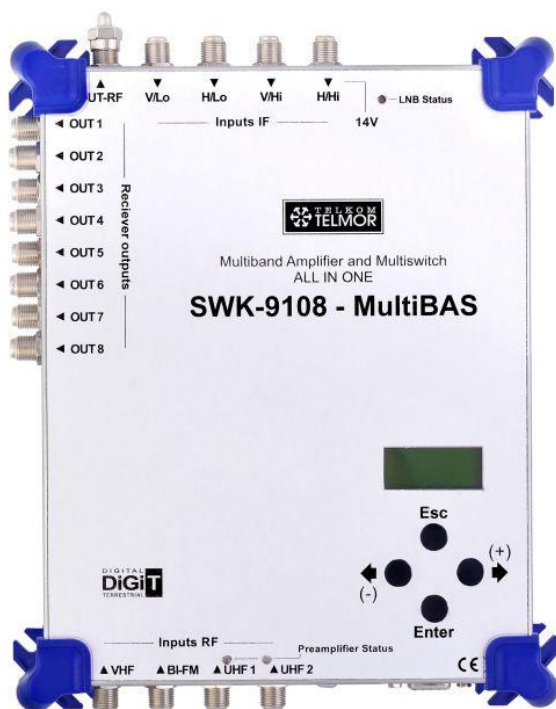


SWK-9108 MultiBAS®

All in one channel amplifier with 5/8 multiswitch



RoHS



- Integration of channel amplifier and multiswitch in a single device
- Two UHF inputs sharing five 8-48MHz adjustment channel tracks
- Ability to power the UHF preamplifiers with 12V voltage
- Diode signalling of the preamplifier work status
- Independent adjustment of each SAT input
- Anti-short circuit protection at UHF and SAT inputs

Innovative device – Polish engineering ideas.

The solution integrates channel amplifier and multiswitch in one housing, which optimizes the costs of installation and reduces the demand for space in the RTV-SAT distribution box. The device is dedicated for RTV-Sat installations in single-family houses.

SWK-9108 is fully compatible with the DVB-S2 and DVB-T standards. The device can provide signal to eight single-head satellite receivers or four PVR type (Personal Video Recorder) SAT receivers, as well as DVB-T signal for ground receivers.

The product allows independent adjustment of the levels of the received digital multiplex. The so-prepared DVB-T signal is summed with the satellite signal with the use of the incorporated 5/8 multiswitch. At the device's output we obtain eight complete RTV-SAT signals, ready for distribution in a star-topology installation. In the RTV-SAT installation, in which SWK-9108 was applied, application of RTV-SAT terminal sockets is required (just like with any multiswitch installation).

In case of necessity to use preamplifiers in ground antennas, SWK-9108 can provide 12V for its input (activated from the controller level).

The device is designed for indoor operation.

Technical parameters are subject to changes without notice

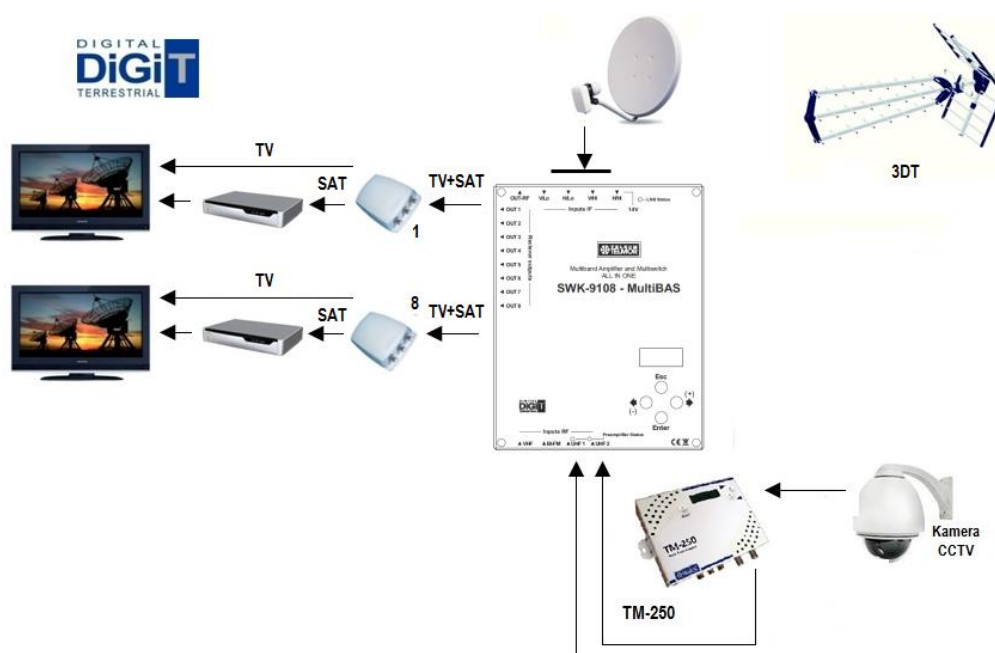
www.telmor.pl

TECHNICAL PARAMETERS

Type		MULTIBAS SWK-9108 – channel amplifier + multiswitch 5/8			
Inputs		SAT	BI/FM	VHF	UHF1, 2
Frequency range	MHz	950÷2150	47÷108	174÷230	470÷862 5 tuneable channel tracks
Gain	dB	5 – 10	20 ±3	20 ±3	35 ±4
Gain adjustment in tracks	dB	10	20 Variable	20 Variable	20 variable
UHF filters selectivity ¹⁾ (type) (for f=f _p ±16MHz)	dB	—	—	—	16
Programmable filters width	MHz	—	—	—	1.6 x TV-Ch / 8..48
Irregularity in 1-channel track	dB	—	—	—	≤ 3
Irregularity in 7-channel track	dB	—	—	—	≤ 10
Noise figure	dB	9	6	6	9
Maximum output level ²⁾	dBμV	100	100	100	100
Separation (type) Rec.SAT/Rec.SAT H/V SAT/RTV	dB	26 26 26	—		
Socket voltage / max. current	V/mA	H/Hi 14/300	—		0/12 /50
Impedance in/out	Ω	75			
Operating temp. range	C (K)	-10...+50C (263...323)			
Supply / Power	VAC, Hz/ VA	~230, 50 / 15			
Dimensions / Weight	mm/ kg	290 x 220 x 50 mm / 1			

1) f_p – extreme channel frequency (beginning of first or end of last channel.)

2) measurement with the use of three-signal method according to (DIN45004B) for third order intermodulation constituents IM3=60dBc (RF), IM3=35dBc (IF)



Example of SWK application in a single-family house

Technical parameters are subject to changes without notice

www.telmor.pl